



LEVITT NETWORK PANEL

**HARMONIC HEALING:
HOW LEVITT AMP COMMUNITIES
REBUILD IN THE WAKE OF
NATURAL DISASTERS**

levitt
2024



LEVITT NETWORK PANEL

Lydia Chatmon, Levitt AMP Selma, AL
Valerie Horn, Levitt AMP Whitesburg, KY
Becky Lind, Levitt AMP Hana, HI

Moderated by Amber Withers, Ph.D., Levitt Foundation



LIVE MUSIC



BUILDING BRIDGES. INSPIRING COMMUNITY.

SELMA
MUSIC SERIES

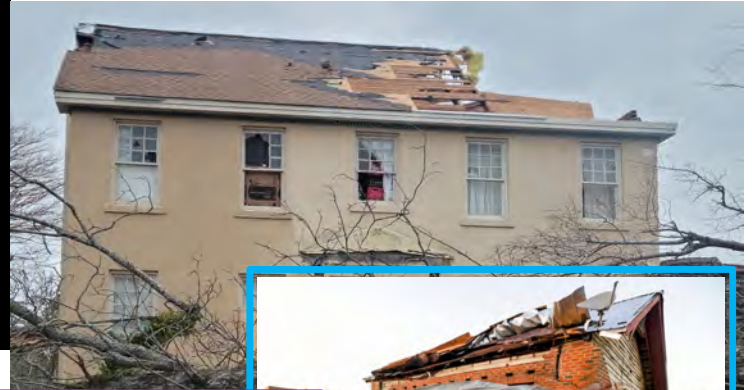
HISTORIC



Selma is one of the most historic cities in America. Within our 14.1 square miles, we are able to capture our nation's history from before our Muscogee family inhabited central Alabama to the continued struggle for equity in the 21st century.

The Storm

On Thursday, January 12, 2023, the historic city of Selma, Alabama experienced an EF-2 tornado.





We were able to provide hot meals, add gift cards to “Blessing Buckets,” and support local business owners impacted by the storm by purchasing gifts for concert-goers largely thanks to the Levitt Emergency Relief Funds.



SUPPORTED



We had an amazing team of past and current residents who helped to plan, market, and produce 10 straight Saturdays of free live music from May through July... in the deep South... on the river... it was HOT!



CONNECTED

COMMITTED



The City of Selma was on board from the beginning and helped to ensure the Levitt AMP Selma Music Series was a success.

- May 27th - August 5th
- Averaged over 200 at each show.
- Became a highly anticipated event for families.
- Attracted visitors from other communities and states.




LEVITT
AMP
SELMA
MUSIC SERIES



RIVERFRONT AMPHITHEATRE & PARK
SATURDAY, JULY 29, 2023
 GATES OPEN AT 5PM SHOWTIME 6PM

FREE ENTRY
 VENDORS
 FOOD TRUCKS

Bring your

LAWN CHAIRS
 TENTS
 COOLERS

presenting sponsor  **RURAL HEALTH
 MEDICAL PROGRAM, INC.**
MEMBER OF THE STATE DEPT



partners



sponsors



supporters



Similar to how we came together to support our neighbors immediately after the tornado, we received an outpouring of support from local businesses and individuals who wanted to help us spread JOY!





Levitt AMP Hāna

Harmonic Healing

By Becky Lind, Executive Director

"I ka wā ma mua, I ka wā ma hope"
To move forward, we must accept the past.
-Hawaiian proverb

www.TourMaui.com
+1 (808) 661-8687

SHARE NOW
#VALLEYISLE
@TOURMAUI

Valley Isle

EXCURSIONS

ROAD TO HĀNA



- 1
- 2
- 3
- 4
- 5
- 6
- 7
- 8
- 9
- 10
- 11
- 12
- 13
- 14
- 15
- 16
- 17
- 18
- 19
- 20
- 21
- 22
- 23
- 24
- 25
- 26
- 27
- 28
- 29
- 30
- 31
- 32
- 33
- 34
- 35
- 36
- 37
- 38
- 39
- 40
- 41
- 42
- 43
- 44
- 45
- 46
- 47
- 48
- 49
- 50



#MusicMoves

Hana Arts
Presents

2023 LEVITT AMP HANA MUSIC SERIES

FREE ENTRY | 3P-6P | HANA FARMERS MARKET

- May 5** GEORGE KAHUMOKU JR.
LAHELA PARK
- June 2** STEPHEN HENDERSON
SHALIA HENDERSON
- June 23** NUFF SEDD
JOSHUA KAHULA
- July 7** LEOKANE PRYOR & C.J. HELEKAHI
JIM "KIMO" WEST
- July 14** KUF KNOTZ & CHRISTINE ELISE
ROWDY LOVE
- August 4** IKAAKAMAI & KUULEI
SUNNY KALAMA
- August 18** AMY HANAIALI'I
SHAI TOLENTINO
- September 1** PAULA FUGA
TANAMA COLIBRI
- September 22** STING KONG
KIKE WILLIAMS
- October 6** ANDREW BEES (OF BLACK UHURU)
FAWN HELEKAHI



WESTAF



Hana Arts
HANA MUSIC SERIES



The Levitt AMP Hana Music Series is supported in part by the Levitt Foundation, which partners with communities across America to activate underused public spaces through the power of free live music, creating welcoming, inclusive destinations where people of all ages and backgrounds come together.

www.levitt.org





Levitt AMP Hana Music Series
CONCERT WITH A CAUSE
With Fundraising Efforts To Support Maui Fire Relief

Amy Hānaiali'i

Featuring
Shai & Jodi Tolentino

#MUSICMOVE



HanaArts.org/music

August 18
Hāna Farmer's Market
Free Entry
3p-6p



WESTAF



Hāna Arts



Hāna Maui
RESORT



The Levitt AMP Hana Music Series is supported in part by the Levitt Foundation, which partners with communities across America to provide world-class public spaces through the power of live music. Levitt Foundation, 1000 Pennsylvania Avenue, NW, Washington, DC 20004. All rights reserved. All other trademarks are the property of their respective owners.

OHA hanaarts.com/#donate
aloaha@hanaarts.com

HAWAII TOURISM
CORPORATION

MAUI
VISITORS & CONVENTION BUREAU





HanaArts.org/music

Levitt Amp Hāna Music Series



LEVITT FOUNDATION

Hāna Farmer's Market
September 22



**3p-6p
Free Entry**

Sting Kong
Featuring
Jank Williams

#MUSICMOVES



Hāna Arts

#MALAMAKUUHOME





HAWAII TOURISM AUTHORITY



WESTAF



Hāna-Maui RESORT



LEVITT FOUNDATION

The Levitt AMP City Name Music Series is supported in part by the Levitt Foundation, which partners with communities across America to activate underused public spaces through the power of free live music, creating welcoming, inclusive destinations where people of all ages and backgrounds come together. levitt.org
Support provided by Hawaii's Tourism Authority through the Community Enrichment Program





Mahalo - Thank you!

www.hanaarts.org

aloha@hanaarts.com

Instagram: @hanaartsmaui

Facebook: @hanaartsprograms

**LEVITT AMP WHITESBURG
VALERIE HORN**



Photo by Malcolm Wilson, Humans of Central Appalachia

James Beard Leadership Award 2023

EKY SOAR Leadership Award 2023

Foundation for KY Healthy Community Champion

Cowan Community Action Group, Inc.

Director

Whitesburg Farmers Market

Board Chair

Community Agricultural Nutritional Enterprises, Inc.

Board Chair

Appalshop

Board Member

Community Farm Alliance

Board Member

What's Next EKY

Leadership Team

Letcher County Culture Hub

Leadership Team

Appalachian Groundswell

Community Engagement

LETCHER COUNTY WHITESBURG, KENTUCKY

Whitesburg is located in Letcher County, which – according to FEMA – is in the 97th percentile for resilience, 94th-96th percentile for National Flood Risk, 91st-95th percentile for low life expectancy, 71st-94th percentile for low income, 88th-95th percentile for unemployment, and 94th-95th percentile for asthma among adults. Letcher County has also had 32 disaster declarations since 1967. Further, Letcher County and all neighboring counties are classified as disadvantaged according to the Climate and Economic Justice Screening Tool and distressed according to the Appalachian Regional Commission's 2023 assessment.



Photo courtesy of Martin Richards

2022 LEVITT AMP WHITESBURG MUSIC SERIES



AND THEN.....

ONE THOUSAND YEAR FLOOD JULY 28, 2022



MUSIC IS LIKE PEACHES.....





FREE FARMERS MARKET

\$25,000 FRESH PRODUCE
DISTRIBUTED



RELIEF FUNDS

Levitt Foundation



**DAVID WHITLOCK OF LEVITT AMP
MIDDLESBORO & VALERIE AND STEVE OF
LEVITT AMP WHITESBURG**



levitt
2024