



REIMAGINING OUR COLLECTIVE FUTURE

Sharon Yazowski

Amber Arianne Brittany
Carly Cerissa Chris
Dagmar Kimberly
Liz Mark Nicole
Rayna Ryan Sydney
Victoria Vanessa

GRATITUDE

BECAUSE **MUSIC** MOVES US

to come together and create change

we are **spending down \$150M**







Power of
Music


Power of
Public
Space



Equitable

Healthy

Thriving



THE ERA OF
REIMAGINATION

2020

2021



2022

2023



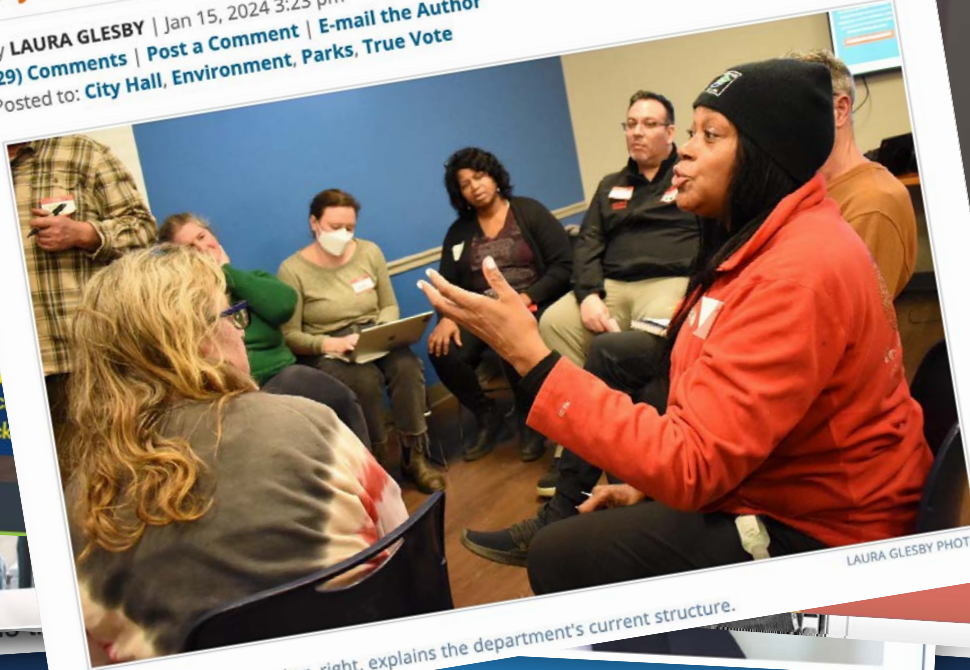


2024

Reimagine

City Starts Reimagining Parks System

by LAURA GLESBY | Jan 15, 2024 3:23 pm
(29) Comments | [Post a Comment](#) | [E-mail the Author](#)
Posted to: City Hall, Environment, Parks, True Vote



LAURA GLESBY PHOTO

Parks staffer Janice Parker, right, explains the department's current structure.

PAR
GRO
New c
Click

CTY RESOURCES

DONATE

RECONSIDER

RETHINK

REVIEW

REVISIT

RECONCEIVE

REASSESS

REDEFINE

REEVALUATE

REANALYZE

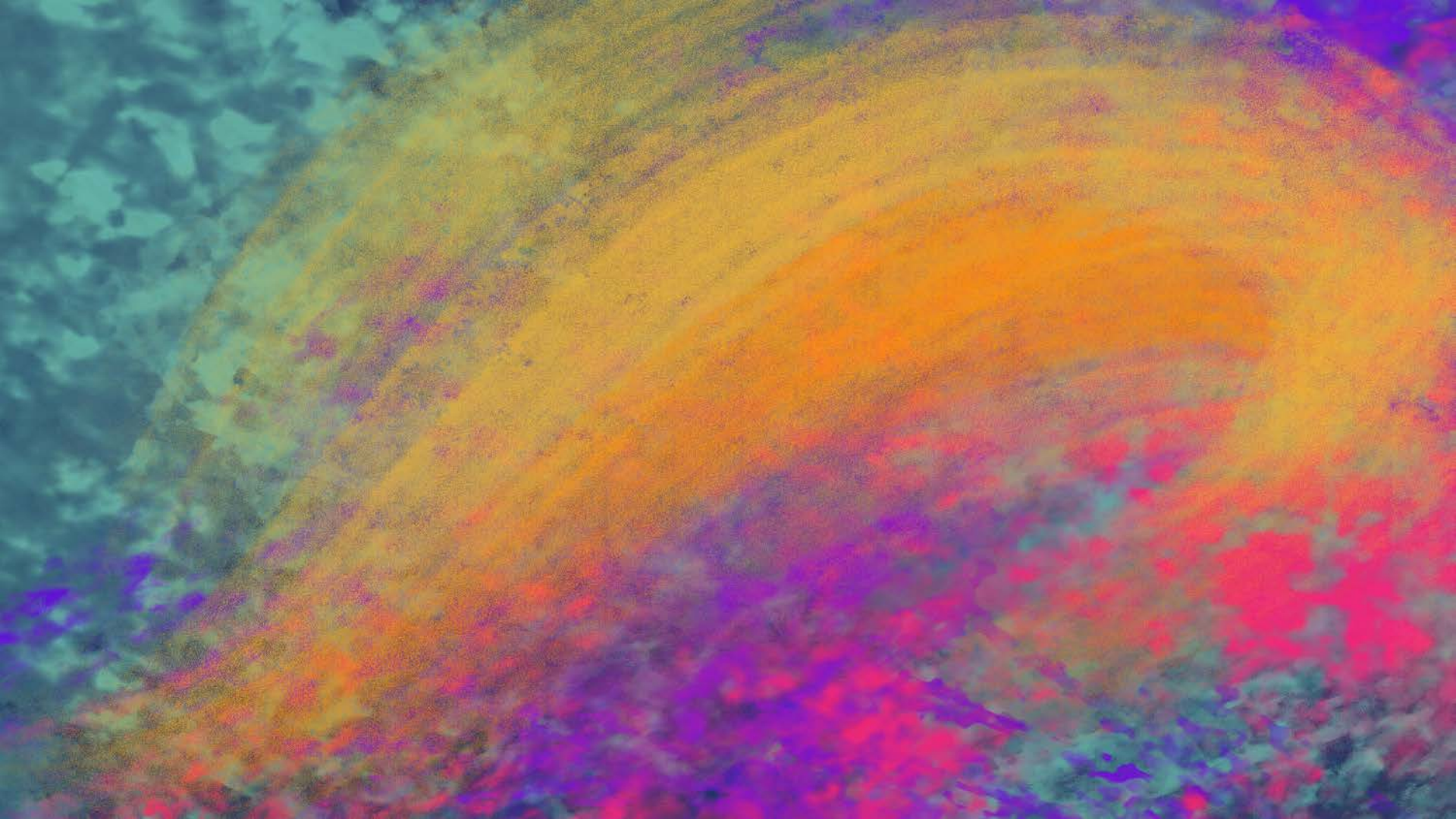
REEXAMINE

REEXPLORE

RECONTEXTUALIZE

READDRESS

RECONCEPTUALIZE



Our Epidemic of Loneliness and Isolation



2023

The U.S. Surgeon General's Advisory on the
Healing Effects of Social Connection and Community





**Pro-connection
public policies**

**Reforming digital
environments**

Research

**Cultivating a
culture of
connection**

**Strengthening
social infrastructure**

**Mobilizing the
health sector**



SETTING THE STAGE FOR COMMUNITY CHANGE:
REFLECTING ON CREATIVE PLACEMAKING OUTCOMES



NOVEMBER 2016

Sarah Lee
Peter Linett
Nicole Baltazar, Ph.D.
Joanna Woronkiewicz, Ph.D.

slovelinett
SLOVER LINETT RESEARCH





**Social
Friction**

**Social
Bonding**

**Social
Bridging**





SOCIAL CAPITAL



Social Cohesion
Public Safety
Health Outcomes
Economic Stability





JOY DYNAMIC
INCLUSIVITY
CONNECTEDNESS
CATALYTIC

JOY

CONNECTEDNESS



CONNECTEDNESS





JOY



BECAUSE **MUSIC** MOVES US

to come together and create change

we are **spending down \$150M**









MAKE MUSIC



VIBRANT INCLUSIVE BEATS FOR EVERYONE

LEVITT
VIBE



LEVITT
VIBE

Belmont Cragin

LEVITT
VIBE

Indianapolis

LEVITT
VIBE

Oakland



ANNE STURM

Levitt Artist Booking & Routing Consultant



PETER ASHWIN

Levitt Safety & Security Consultant

LEVITT PUBLIC SAFETY STEERING COMMITTEE



Peter Ashwin
Levitt Safety & Security Consultant



Kimberly James
Levitt Foundation



Tina Betz
Levitt AMP
Wilmington



Jake Paron
Levitt
Sioux Falls



Cory Stevens
Levitt
SteelStacks



Abbey Brown
Levitt
Dayton



Angela Peña
Levitt
Arlington



Allie Thut
Levitt AMP
Green Bay



Jason Lindstrom
Levitt AMP
Galva



Luna Spivey
Levitt
Denver



Becki Zaglifa
Levitt AMP
Shenandoah Junction

LEVITT FOUNDATION SPEND DOWN TIMELINE

2022 – 2023	Announcement & Strategic Planning
2023 – 2026	Ramp-Up Phase
2027 – 2036	Significant Grantmaking
2037 – 2040	Wind-Down Phase
2041	Sunset & Departing Gifts
2042+	Free Concerts Continue

ESSENTIAL COMMUNITY ELEMENTS



